

speedikon Facility Management AG Firmenprofil



Zentrale in Bensheim

Geschäftsfelder

speedikon FM
Aktiengesellschaft

- CAFM
- Life Cycle Management
- Technisches FM
- Mietmanagement
- Services
- **Rechenzentrumsverwaltung**
- Fabrikinformationssysteme
- Brandschutz und Sicherheit

www.speedikonfm.com

WiriTec

- Energiemanagement
- Energieeffizienz
- Messdatenerfassung
- Hardware (WiriBox)

www.wiritec.com

 **INNOMATIK**
SERVICES GmbH

- CAFM Dienstleistungen
- Datenerfassung
- Datenaufbereitung
- Datenpflege
- Schulungen

www.innomatik.de

Erfahrung der speedikon Facility Management AG

**Mehr als 2000
Projekte erfolgreich
realisiert**

**Mehr als 600
Kunden in
Deutschland**

**17
Consultants**

**19
Entwickler**

**3
Hotline-
Mitarbeiter**

**16
Vertrieb
Administration
Backoffice**

Nationales und internationales Partnernetzwerk
ca. 150 Fachleute mit sehr guten *speedikon*[®] FM Kenntnissen



Industriepark Wolfgang



Weitere Informationen zu den Referenzen finden Sie
unter www.speedikonfm.com → Referenzen



diakonie stetten



der Landkreis Bayreuth
Vielfalt & Visionen



Kreis Herford

Stadt Weiterstadt



Stadt Gifhorn



Kreis Stormarn



Märkischer Kreis



Ruhrfestspielstadt
RECKLINGHAUSEN



main-taunus-kreis



Forschungszentrum Karlsruhe
in der Helmholtz-Gemeinschaft



ist erdet!
oberhavel



Landkreis Hildesheim



Kanton Zürich



Kreis Waldeck-Frankenberg



Weitere Informationen zu den Referenzen finden Sie
unter www.speedikonfm.com → Referenzen

Barmenia
Versicherungen

**DG
HYP** Deutsche
Genossenschafts-
Hypothekenbank

 **HUK-COBURG**
Versicherungen · Bausparen

 **DZ BANK**

DekaBank

LVM 
Versicherungen

PROVINZIAL
Die Versicherung der Sparkassen
Provinzialplatz 1 · 40591 Düsseldorf
Telefon (0211) 978-0
www.provinzial.com

hr hessischer
rundfunk

AOK
Die Gesundheitskasse


Airport Nürnberg

VVB

SWR 
SÜDWESTRUNDFUNK

Düsseldorf
International

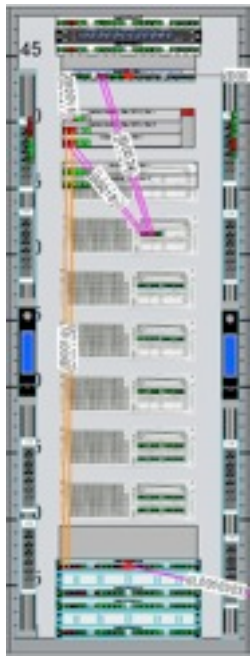
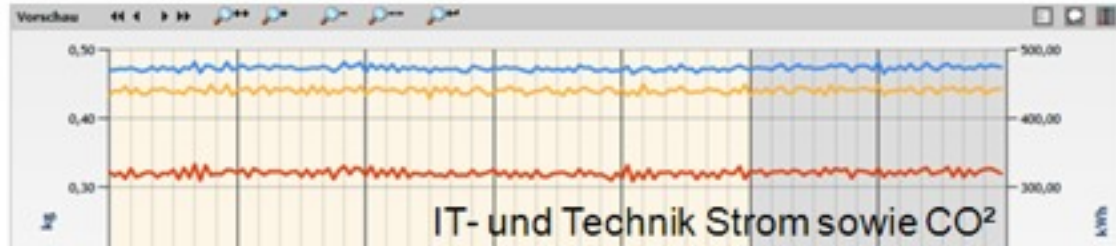

Messe
Frankfurt

ATU
Auto-Teile-Unger

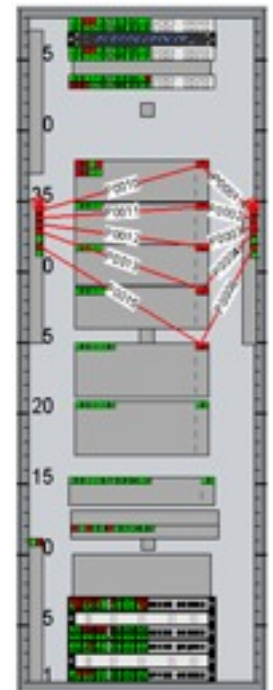
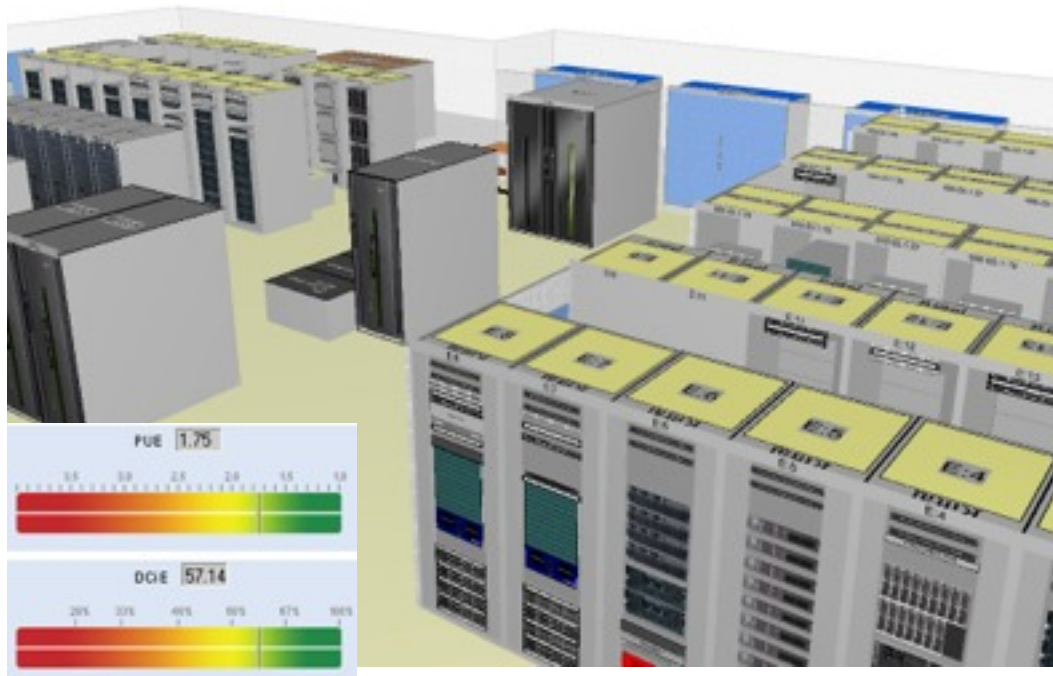
Weitere Informationen zu den Referenzen finden Sie
unter www.speedikonfm.com → Referenzen

speedikon[®] DAMS

Intelligentes Asset-, Kabel-, und Energiemanagement im Rechenzentrum



Netzwerk



Power

speedikon® DAMS Modulübersicht

Asset Management

Verwaltung der IT und Infrastruktur Assets

Kabelmanagement

Dokumentieren der Kabelverbindungen

Energiedatenmanagement

Visualisieren von Onlinewerten

Workorder

Workflow zum Generieren von Arbeitsaufträgen

Kapazitätsplanung

Prognosen - Zukunftsplanung

Mobile Datenerfassung

Scannen der Assets - Inventur

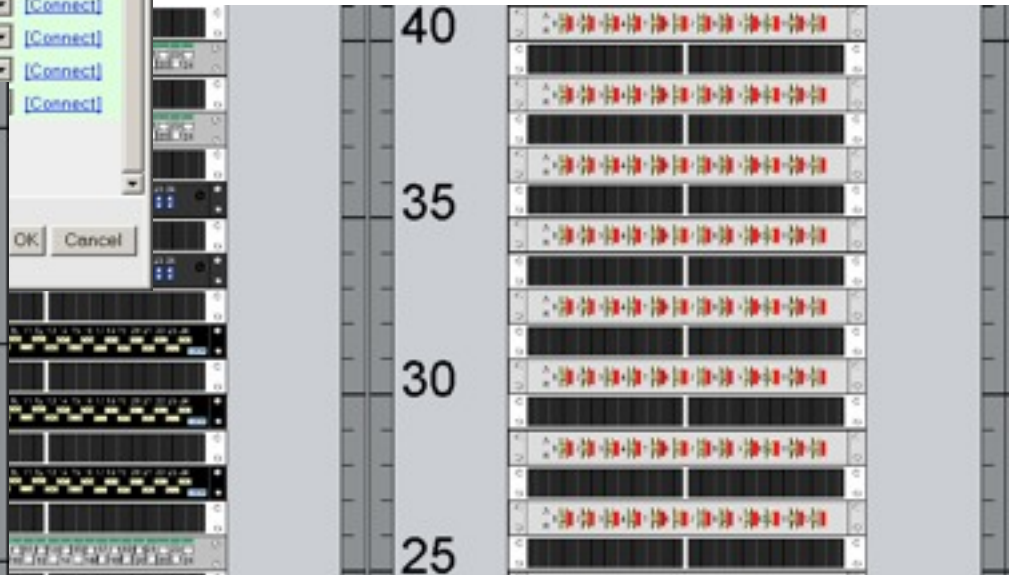
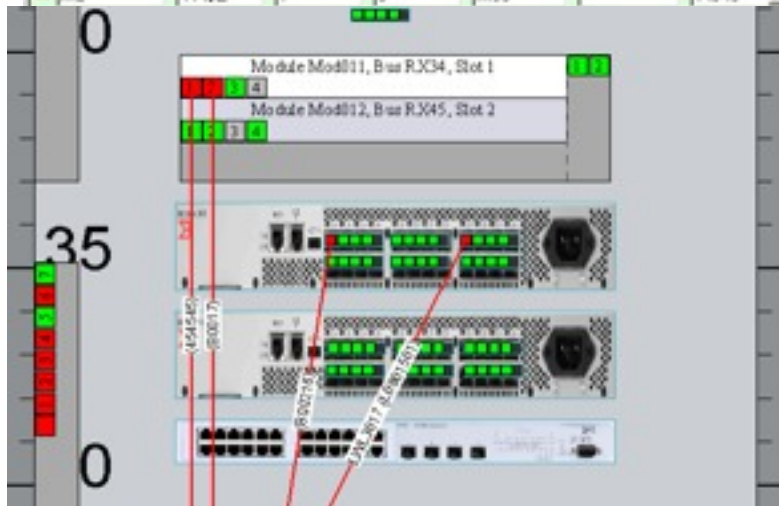
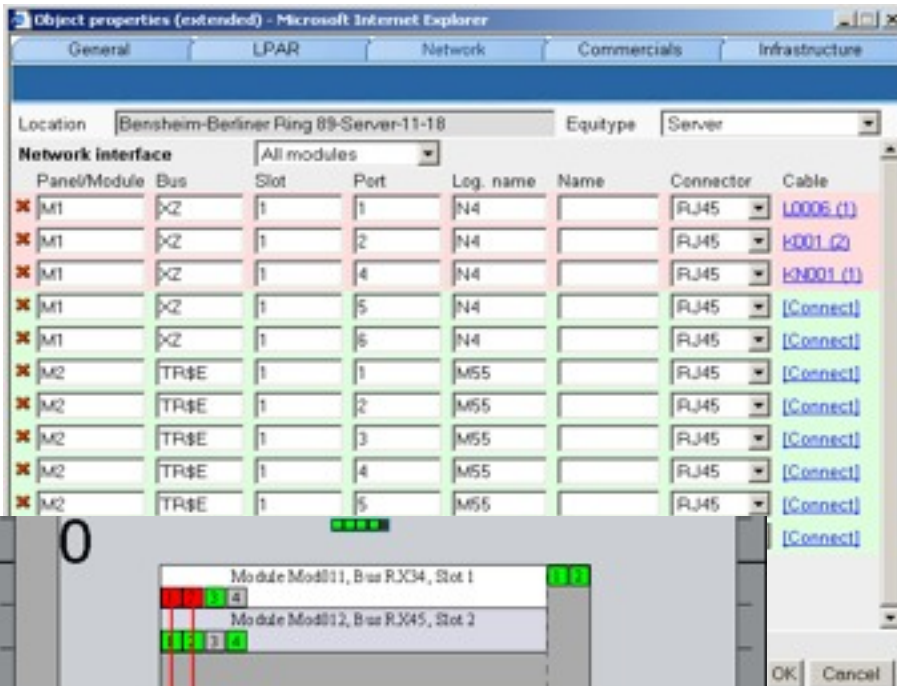


speedikon® DAMS Asset Management

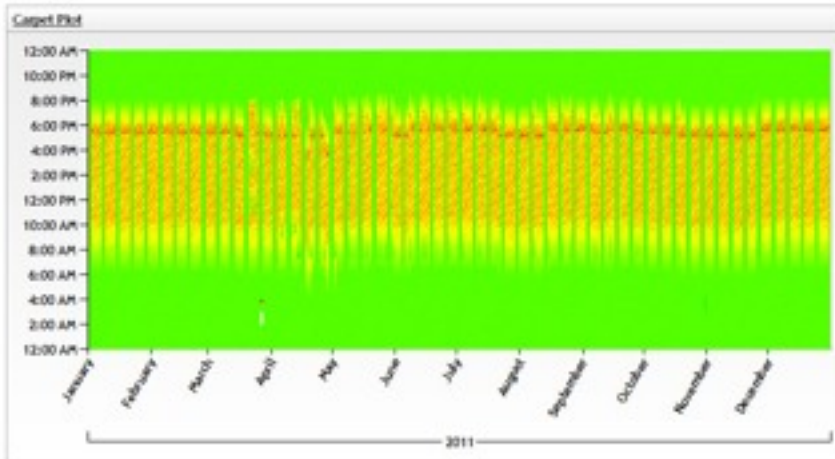
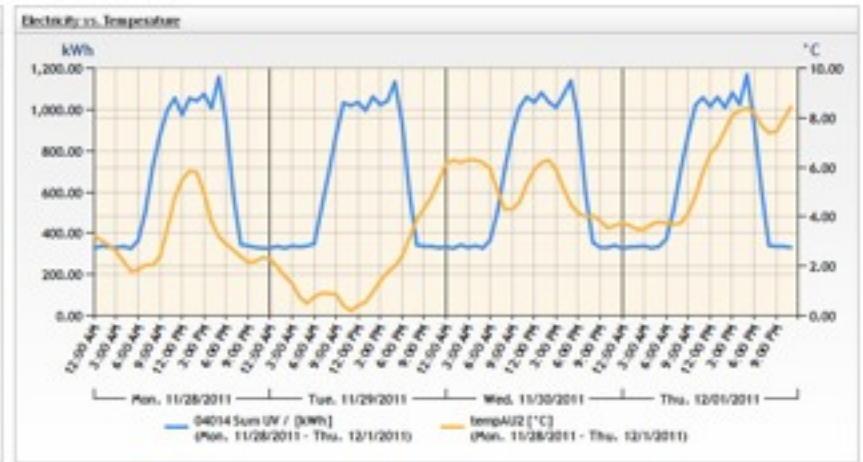
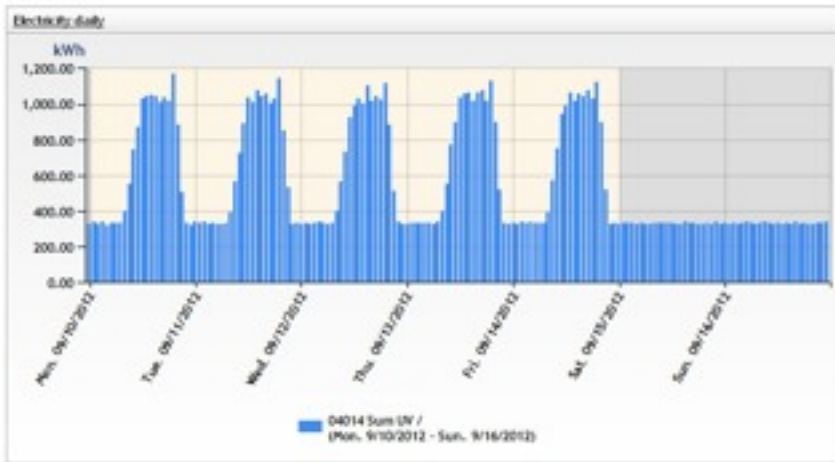


speedikon® DAMS Kabel Management

- Zuordnen der Kabel zu den einzelnen Ports
- Visualisieren der Verbindungen
- Grafisches Patchen
- Logische Prüfungen



speedikon® DAMS Energiedatenmanagement



Temperature (Table)

| Date / Time | Temperature |
|--------------------|-------------|
| 7/12/2010 12:00 AM | 24.51 °C |
| 7/12/2010 12:15 AM | 24.27 °C |
| 7/12/2010 12:30 AM | 24.07 °C |
| 7/12/2010 12:45 AM | 25.07 °C |
| 7/12/2010 1:00 AM | 24.90 °C |
| 7/12/2010 1:15 AM | 24.64 °C |
| 7/12/2010 1:30 AM | 24.43 °C |
| 7/12/2010 1:45 AM | 24.75 °C |
| 7/12/2010 2:00 AM | 24.55 °C |
| 7/12/2010 2:15 AM | 24.12 °C |
| 7/12/2010 2:30 AM | 24.16 °C |
| 7/12/2010 2:45 AM | 24.00 °C |
| 7/12/2010 3:00 AM | 23.99 °C |
| 7/12/2010 3:15 AM | 23.70 °C |
| 7/12/2010 3:30 AM | 23.70 °C |
| 7/12/2010 3:45 AM | 23.75 °C |

1 2 3 4 5 6 7 8 9 10 ...

speedikon® DAMS Workorder

Work order name:





















Work order description:

Work order starts: Work order ends:

Responsibility:

Contributors:

Work order items:

| | | Work order | Ort | Device | Beschreibung | Status | User | Date |
|----|---|--------------------------|---------------------------------|--|---|---|-------|------------------------|
| 1 |   | Disconnect network cable | Frankfurt-DC1-1-6-37-Mod011-1-1 | Host01, IBM, x3850 44cm, 72cm, 13,34cm, 3 | Cable "B00215" disconnect | | admin | 2012-09-06 10:09:23 |
| 2 |   | Disconnect network cable | Frankfurt-DC1-1-6-37-Mod011-1-2 | Host01, IBM, x3850 44cm, 72cm, 13,34cm, 3 | Cable "B0016" disconnect | | admin | 2012-09-06 10:09:23 |
| 3 |   | Disconnect network cable | Frankfurt-DC1-1-6-37-Mod012-2-1 | Host01, IBM, x3850 44cm, 72cm, 13,34cm, 3 | Cable "B0018" disconnect | | admin | 2012-09-06 10:09:23 |
| 4 |   | Disconnect network cable | Frankfurt-DC1-1-6-37-Mod012-2-2 | Host01, IBM, x3850 44cm, 72cm, 13,34cm, 3 | Cable "B00189" disconnect | | admin | 2012-09-06 10:09:23 |
| 5 |   | Disconnect power cable | Frankfurt-DC1-1-6-37-1 | Host01, IBM, x3850 44cm, 72cm, 13,34cm, 3 | Cable "P0001" disconnect | | admin | 2012-09-06 10:09:23 |
| 6 |   | Disconnect power cable | Frankfurt-DC1-1-6-37-2 | Host01, IBM, x3850 44cm, 72cm, 13,34cm, 3 | Cable "P0010" disconnect | | admin | 2012-09-06 10:09:23 |
| 7 |   | Move | Frankfurt-DC1-1-6-37 | Host01, IBM, x3850 44cm, 72cm, 13,34cm, 3 | Move to location "Frankfurt-DC1-W-3-35" | <input type="text" value="Productive"/> | admin | 2012-09-06 10:10:29 |
| 8 |   | Install | Frankfurt-DC1-W-3-32 | IBM, 1818-SR2 44cm, 77cm, 4,44cm, 1 | | <input type="text" value="Productive"/> | admin | 2012-09-06 10:10:40 |
| 9 |   | Connect network cable | Frankfurt-DC1-W-3-39-PP-1-1 | Infrastructure, 1U 24ports distrib 45cm, 4,45cm, 4,44cm, 1 | Cable "B0018" connect | <input type="text" value="B0019"/> | admin | 2012-09-06 10:11:08 |
| 10 |   | Connect network cable | Frankfurt-DC1-1-6-37-Mod011-1-1 | Host01, IBM, x3850 44cm, 72cm, 13,34cm, 3 | Cable "B0018" connect | <input type="text"/> | admin | 2012-09-06 10:11:08 |

speedikon® DAMS Future Resource Management



Capacity Planning over 12 Month(s) Period

From 2010-04-01 to 2011-03-31

| Location: Frankfurt-Datcenter4 | Apr | May | Jun | Jul | Aug | Sep | Oct | Nov | Dec | Jan | Feb | Mar |
|--------------------------------|-----|-----|-----|-----|-----|-----|-----|-----|-----|-----|-----|-----|
| Electrical Input | 652 | 652 | 691 | 691 | 691 | 697 | 697 | 697 | 697 | 662 | 662 | 662 |
| Net Power | 800 | 800 | 800 | 800 | 800 | 800 | 800 | 800 | 800 | 800 | 800 | 800 |
| Reserved Net Power | 140 | 140 | 109 | 109 | 109 | 103 | 103 | 103 | 103 | 138 | 138 | 138 |
| Heat Output | 594 | 594 | 633 | 633 | 633 | 638 | 638 | 638 | 638 | 603 | 603 | 603 |
| Cooling Capacity | 650 | 650 | 850 | 850 | 850 | 850 | 850 | 850 | 850 | 650 | 650 | 650 |
| Reserved Cooling Capacity | 56 | 56 | 217 | 217 | 217 | 212 | 212 | 212 | 212 | 47 | 47 | 47 |

speedikon® DAMS Scannen Inventurlisten

Microsoft Excel - stocktaking.xls

| | A | B | C | D |
|----|------------------|---------------------|---|---|
| 1 | 55578456 | Standalone | | |
| 2 | GB8547R846 | OK | | |
| 3 | 75-GB130 | Moved (destination) | | |
| 4 | 5H44443001175F | OK | | |
| 5 | RJ32928-NN | New | | |
| 6 | RJ32928 | Missing | | |
| 7 | SHU4444300112E99 | Moved (source) | | |
| 8 | 55578457 | Standalone | | |
| 9 | 75-GA177 | OK | | |
| 10 | 13K2309 | OK | | |
| 11 | 13G9771 | OK | | |
| 12 | SHU4444300112E99 | Moved (destination) | | |
| 13 | SG32000029 | OK | | |
| 14 | 13K2311 | OK | | |
| 15 | 13K2310 | OK | | |
| 16 | SG44610109 | OK | | |
| 17 | 55578458 | Standalone | | |
| 18 | 75-FW993 | OK | | |
| 19 | 75-FV032 | OK | | |
| 20 | 75-EG977-NN | New | | |
| 21 | 75-DJ763 | OK | | |
| 22 | 75-DY314 | OK | | |
| 23 | 75-EG977 | Missing | | |
| 24 | 75-GB130 | Moved (source) | | |
| 25 | | | | |
| 26 | | | | |
| 27 | | | | |

Ready

PDA data configuration - Microsoft Internet Explorer

Select locations
Text

Configure attributes
Previous config: default
Config name: default

serialnr
equint
status
equitype
manufacturer
model
id

Remove
Up
Down
Add attribute

Done



Management Report: Kenndaten eines Rechenzentrums

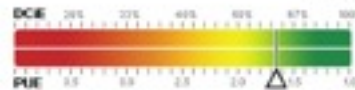
Frankfurt-Datacenter_1



| | |
|----------------------------|----------------|
| Active Energy consumption: | kW |
| Total DC | 420 |
| Total IT | 240 |
| Total teleshort | 180 |
| UPS: | kVA |
| Max | 380 |
| Current | 0 |
| Active Cooling Power: | kW |
| Max Cooling Power | 460 |
| Current Cooling Power | 30 |
| Rack space: | |
| Total Cabinet Space | 132 |
| Occupied Cabinet Space | 88 |
| Free Cabinet Space | 44 |
| Facility: | m ² |
| Total Space | 110,00 |
| Total Space Used | 77,25 |

Efficiency Level

Current Efficiency Level: PUE = 1.75
DCE = 57.14



PUE - DCE - Electricity - Cooling Power - Temp

